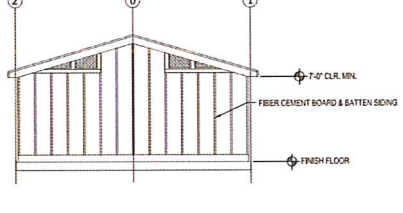
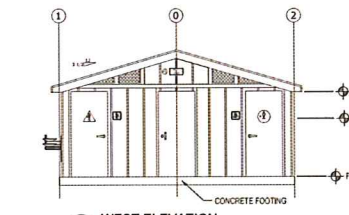


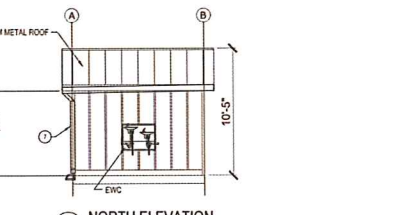
1 PLAN VIEW
SCALE: 3/16" = 1'-0"



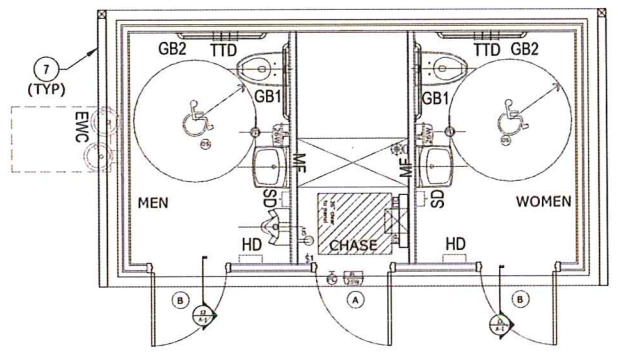
2 EAST ELEVATION
SCALE: 3/16" = 1'-0"



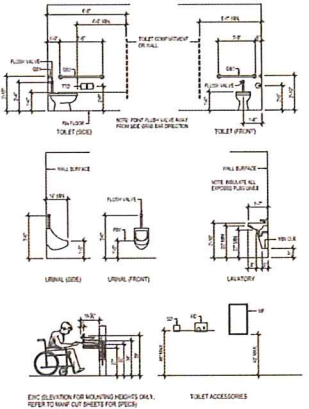
3 WEST ELEVATION
SCALE: 3/16" = 1'-0"



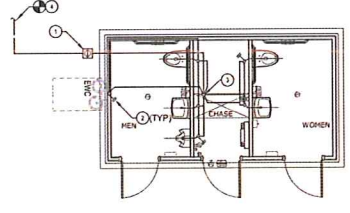
4 NORTH ELEVATION
SCALE: 3/16" = 1'-0"



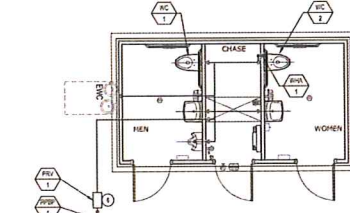
7 FLOOR / ROOF DRAINAGE PLAN
SCALE: 3/16" = 1'-0"



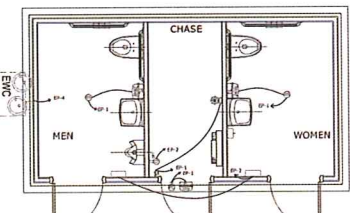
8 ACCESSIBLE FIXTURES
SCALE: 3/16" = 1'-0"



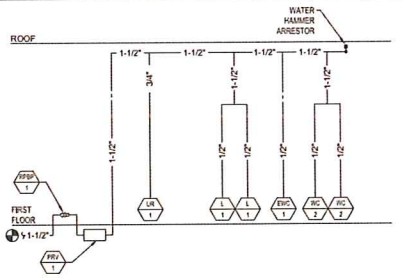
9 PLUMBING FLOOR PLAN - SEWER & VENT
SCALE: 3/16" = 1'-0"



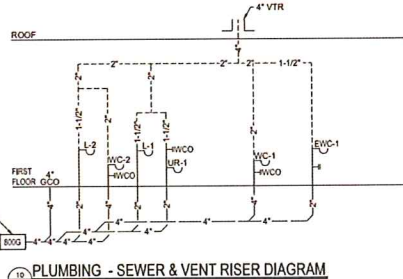
10 PLUMBING FLOOR PLAN - DOMESTIC WATER
SCALE: 3/16" = 1'-0"



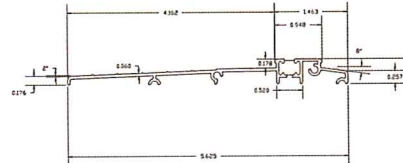
11 ELECTRICAL FLOOR PLAN
SCALE: 1/4" = 1'-0"



12 PLUMBING - DOMESTIC WATER RISER DIAGRAM
SCALE: NONE



13 PLUMBING - SEWER & VENT RISER DIAGRAM
SCALE: NONE



14 CROSS SECTION OF THRESHOLD (ADA)
SCALE: NTS

GENERAL NOTES

- SANITARY SEWER POINT OF CONNECTION WILL BE TO EXISTING FIRE HOUSE SYSTEM. A FUTURE P.O.C. WAS INCORPORATED INTO THE DESIGN OF THE FIRE HOUSE AT THAT TIME FOR THIS PURPOSE. THE DESIGN ENGINEER/ARCHITECT SHALL VERIFY THAT ALL ACCESSIBLE PARKING AND A PATH OF TRAVEL COMPLIES WITH ALL FEDERAL AND STATE ACCESSIBILITY REQUIREMENTS. CONSTRUCTION DOCUMENTS MUST BE DRAWN WITH SUFFICIENT CLARITY TO INDICATE NATURE AND EXTENT OF WORK ASSOCIATED WITH ACCESSIBILITY.
- POTABLE WATER SUPPLY FOR RESTROOMS PROVIDED BY BCPOD PUBLIC WATER SYSTEM.
- PARK RESTROOM BUILDING IS A PRE-MANUFACTURED UNIT BY RESTROOM FACILITIES LIMITED. READY FOR TURNKEY INSTALLATION. SITE PREPARATION AS FOLLOWS:
 4.1. ELEVATE DOWN SEVENTEEN (16) INCHES BELOW THE FINISH FLOOR ELEVATION (6' FOR CLASS B BASE, 8" FOR SLAB THAT IS SHIPPED ATTACHED TO THE BUILDING, AND 2" FOR SAND BED).
 4.2. IMPORT 6" OF CLASS B BASE AND COMPACT TO 95% OR TO A LOCAL CODE REQUIREMENT.
 4.3. COMPACT 1" OF OVER PERIMETER FOOTING EXTENTS (OVER-BUILD).
 4.4. FINAL EXTERIOR COLOR TO BE CHOSEN BY MESA PARK BOARD OF DIRECTORS FROM MFR'S STANDARD OPTIONS.
 5. ADD 800 GALLON CONCRETE SEPARATION TANK TO THE NEW SEWER LINE FOR THE NEW RESTROOMS.

ROOM FINISH SCHEDULE

ROOM NAME	FLOOR	BASE	WALLS	CEILING	CEILING	REMARKS
WOMEN'S RESTROOM	CONC-SE	CONC-SE	MDF/SH. FRP. P.	OPEN TO CLG. P.	2'-2"	
MEN'S RESTROOM	CONC-SE	CONC-SE	MDF/SH. FRP. P.	OPEN TO CLG. P.	2'-2"	
EQUIPMENT ROOM	CONC-SE	CONC-SE	CONC-SE	OPEN TO CLG. P.	2'-2"	

ROOM FINISH SCHEDULE LEGEND

WB	WOOD BOND	GRB	STIPPL. WALL BOARD	SE	SEALANT
EX	EXPOSED	MR	MOISTURE RESISTANT	FRP	FRP PANELING
CONC	CONCRETE	P	PAINT		

DOOR, FRAME & HARDWARE SCHEDULE

NO.	LOCATION	FRAME	WIDTH	HEIGHT	THICKNESS	MARK	HARDWARE
1	WOMEN'S TOILET	HM	2'-0"	7'-2"	1-3/4"	HM	CL. #13. TH. LK. ADA W/ACCESSIBLE RESTROOM SIGN
2	MEN'S TOILET	HM	2'-0"	7'-2"	1-3/4"	HM	CL. #13. TH. LK. ADA W/ACCESSIBLE RESTROOM SIGN
3	EQUIPMENT ROOM	HM	2'-0"	7'-2"	1-3/4"	HM	RS. PR. TH. LK.

DOOR HARDWARE SCHEDULE LEGEND

CL	CLOSER	WS	WALL STOP	DL	DECKNO. LOCK
HP	HOLD PLATE	PP	PUSH/PULL	LK	LEVER HANDLE WITH LOCKSET
HM	HOLLOW METAL	TK	THRESHOLD		

ACCESSORIES LEGEND

MARK	DESCRIPTION
SD	SOAP DISPENSER
MF	1/4" GLASS MIRROR WITH SS FRAME - 22" W x 36" H (WITH SHELF)
EWCO	ELECTRIC WATER COOLER
TTD	TOILET TISSUE DISPENSER (DOUBLE ROLL AT EACH TOILET COMPARTMENT)
GB1	3/8" GRAB BAR AT EA ACCESSIBLE TOILET COMPARTMENT
GB2	3/8" GRAB BAR AT EA ACCESSIBLE TOILET COMPARTMENT
HD	ELECTRIC HAND DRYER

LEGENDS

WOMEN'S RESTROOM	ROOM NAME DESIGNATION	FFP	FINISH FLOOR PANELING
DRY WALL	DRY WALL	GR	GROUNDING
TOILET ACCESSORIES	REFER TO SCHEDULE	120V	120 VOLT HOMERUN
PHOTO CELL	PHOTO CELL	OC	OCCUPANCY SENSOR
FLUORESCENT LIGHT	FLUORESCENT LIGHT	PRV	PRESSURE REDUCING VALVE
URINAL	URINAL	DCV	DOUBLE CHECK VALVE BACKFLOW PREVENTER

ELECTRICAL ABBREVIATIONS

AF	AMP FUSE (SIZE), AMP FRAME (SIZE)
AFB	ABOVE FINISH FLOOR
AS	AMP SWITCH (SIZE)
C	CONDUIT
(E)	EXISTING
GFI	GROUND FAULT INTERRUPTER PROTECTION
GND	GROUND
MLO	MANY LUGS ONLY
NEC	NATIONAL ELECTRICAL CODE
NTS	NOT TO SCALE
P	POLE
PH OR B	PHASE
TYP	TYPICAL, UNLESS OTHERWISE NOTED, OF MANY UNLESS OTHERWISE NOTED OR INDICATED
V	VOLTS
W/P	WEATHERPROOF

ELECTRICAL BRANCH CIRCUIT WIRING NOTE

- FOR RECEPTACLE CIRCUITS & 120V BRANCH CIRCUITS, UNLESS NOTED OTHERWISE, PROVIDE THE FOLLOWING CONDUCTORS: (1) #12 NEUTRAL CONDUCTOR FOR EACH PHASE (i.e. CIRCUIT NUMBER); (1) #12 NEUTRAL CONDUCTOR FOR EACH SINGLE 120 VOLT CIRCUIT OR FOR 2 TO 3 CIRCUITS PROVIDED THEY ARE OF DIFFERENT PHASES; (1) EQUIPMENT GROUNDING CONDUCTOR, SIZED PER NEC ART. #250.
- FOR LIGHTING BRANCH CIRCUITS, PROVIDE THE FOLLOWING CONDUCTORS: (1) #12 CONDUCTOR FOR EACH PHASE (i.e. CIRCUIT NUMBER); (1) #12 NEUTRAL CONDUCTOR FOR A SINGLE, 120 VOLT CIRCUIT, OR (1) #12 NEUTRAL CONDUCTOR FOR 2 TO 3 CIRCUITS WHERE EACH CIRCUIT IS ON A DIFFERENT PHASE; (1) EQUIPMENT GROUNDING CONDUCTOR, SIZED PER NEC ART. #250.

KEY NOTES

- HEAVY DUTY TRAFFIC RATED GRADE CLEANOUT.
- WALL CLEANOUT.
- VENT THRU ROOF.
- SEWER POINT OF CONNECTION. SEE CIVIL PLANS FOR CONTINUATION.
- 1-1/2" CW POINT OF CONNECTION. SEE CIVIL PLANS FOR CONTINUATION.
- CW PRV AND MAIN BUILDING SOV IN CONCRETE YARDBOX MARKED "WATER".
- NEW GUTTERS, SLOPED TO DOWNSPOUT AND CONCRETE PANS. SITE GRADE TO BE SLOPED 5% FOR 10' AWAY FROM RESTROOM STRUCTURE.
- 800 GALLON CONCRETE SEPARATION TANK.

DATE: 11/03/2015
 PROJECT: MESA PARK IRRIGATION & RESTROOM PROJECT
 CONTRACT NO.:
 DESIGNED BY: [Signature]
 DRAWN BY: [Signature]
 CHECKED BY: [Signature]
 SUBMITTED BY: [Signature]
 PLOT DATE: 11/03/2015
 PLOT SCALE: AS SHOWN
 FILE NUMBER: A1
 SHEET: 3 OF 5

RESROOM DESIGN CONCEPT
 ARCHITECTURAL, MECHANICAL, & ELECTRICAL PLANS

PROFESSIONAL SEAL
 SHEET IDENTIFICATION
 A1