



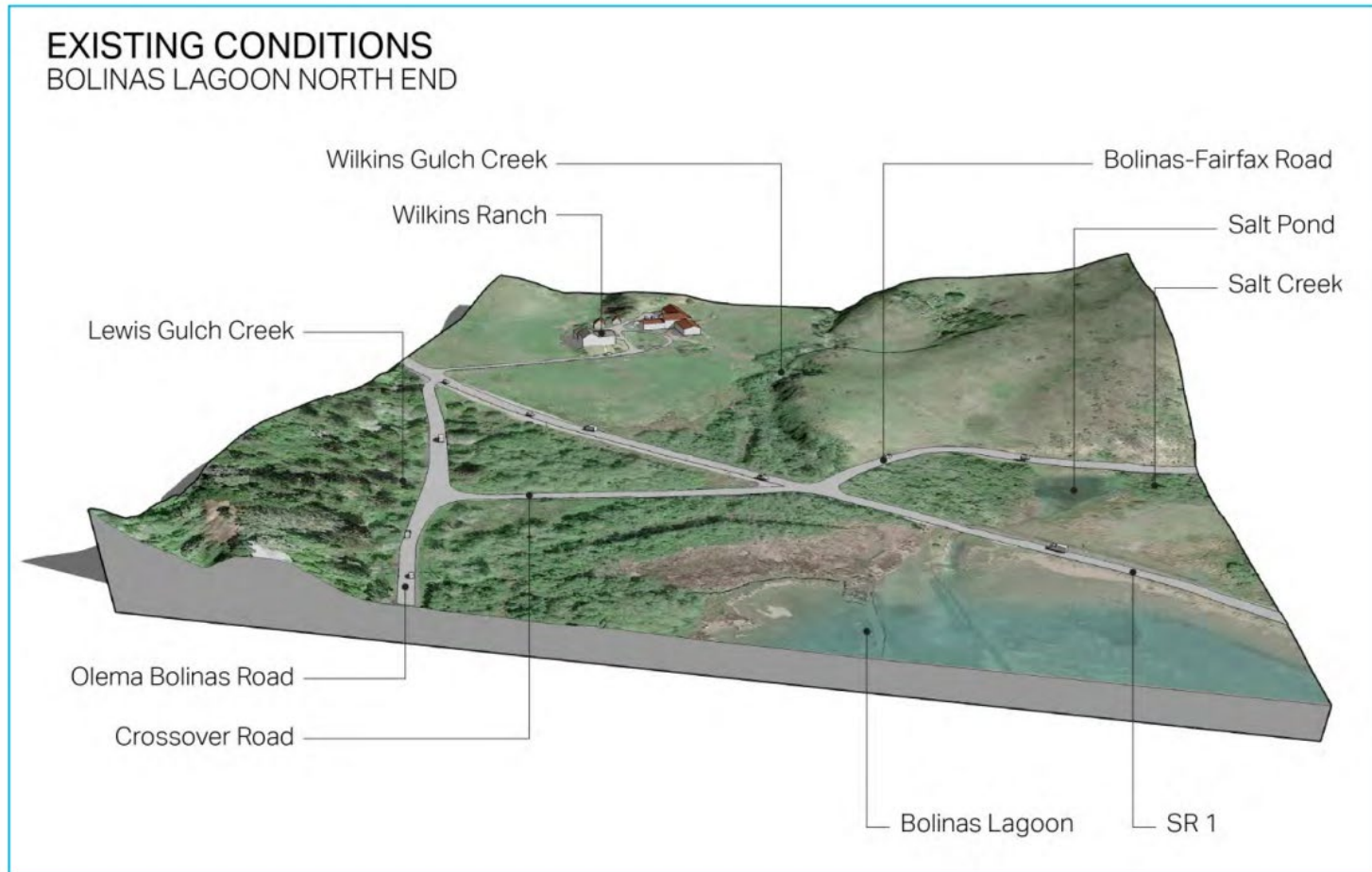
Bolinas Wye Wetlands Resiliency Project

Bolinas Community Public Utility District
December 16, 2020

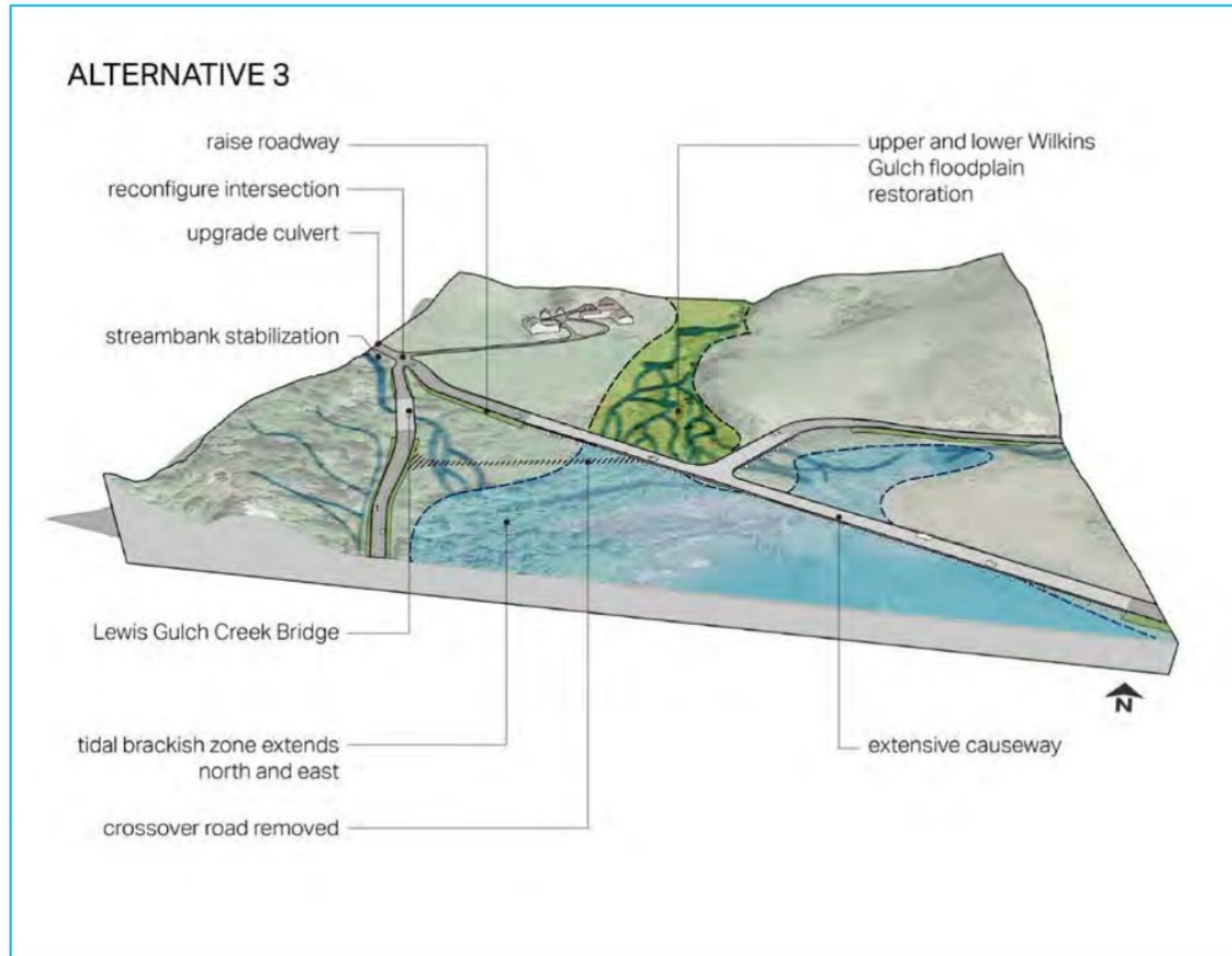
BACKGROUND

- 2008 *Recommendations for Restoration and Management* (AKA Locally Preferred Plan, LPP)
 - 4-LPP, 6-LPP, 9-LPP :
 - Restoring habitat and hydrologic connectivity
 - Adapting to climate change and SLR
 - Improving road safety
- 2016 Bolinas Lagoon North End Site Conditions Report
- 2017 Bolinas Lagoon North End Conceptual Design Report
- 2019 Bolinas Wye Wetlands Resiliency Project initiated

BOLINAS LAGOON NORTH END PROJECT



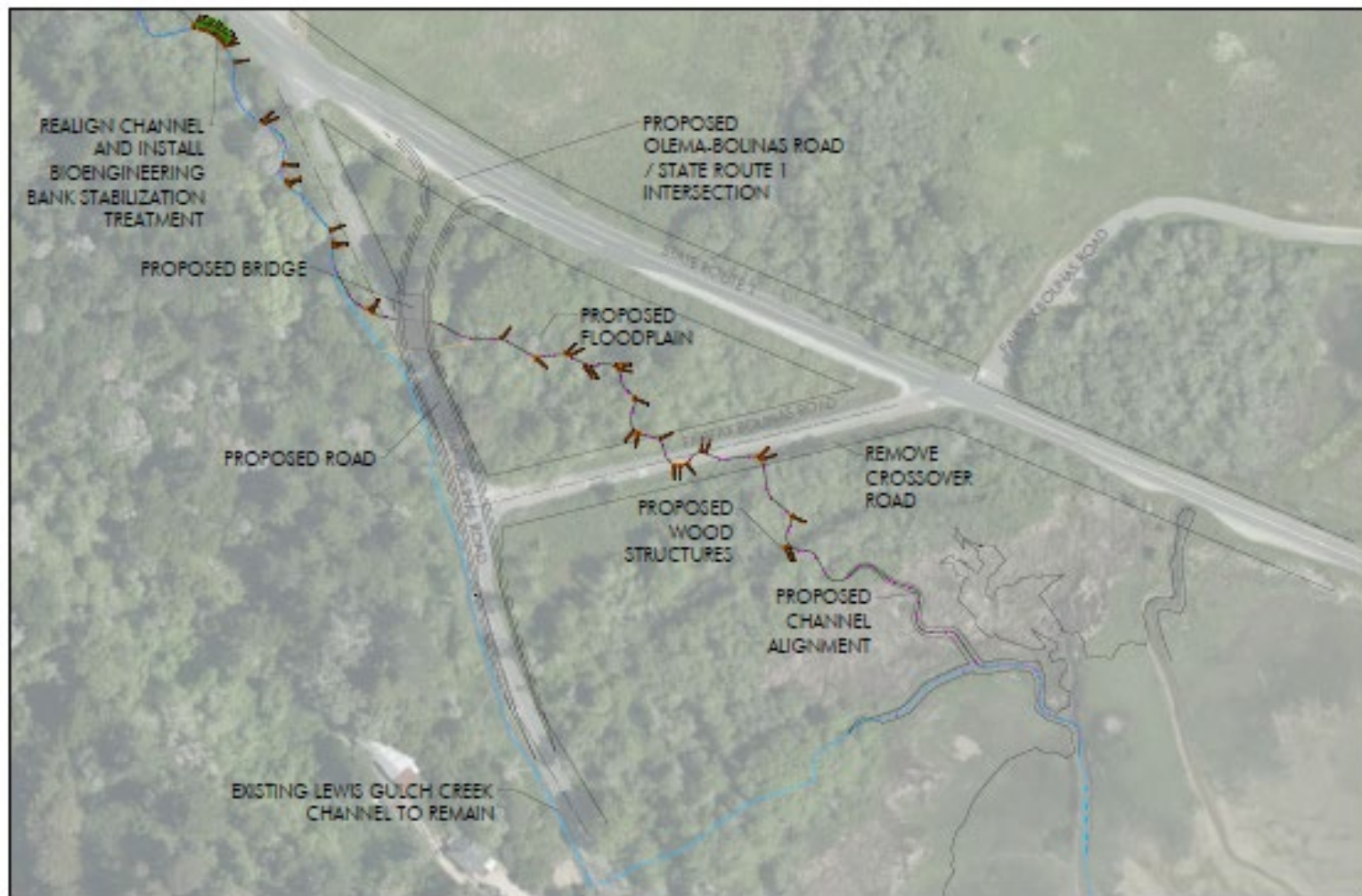
BOLINAS LAGOON NORTH END VISION



BOLINAS WYE WETLANDS RESILIENCY PROJECT GOALS

- **GOAL 1: Habitat Restoration and Reconnection: Improve the hydrologic and geomorphic function and stream flow conveyance of Lewis Gulch Creek and enhance riparian and wetland habitats.**
 - OBJECTIVE: Restore hydrologic and ecologic processes and reduce the need for human intervention and maintenance.
- **GOAL 2: Road Safety: Alleviate chronic flooding of Marin County roadways to improve traffic safety.**
 - OBJECTIVE: Realign and elevate Olema Bolinas Road to improve safety and reduce road flooding during winter storm and high tide events.
- **GOAL 3: Climate Change and Sea Level Rise Adaptation: Allow for future expansion of Bolinas Lagoon and its tidal-freshwater transition zone as sea level rises.**
 - OBJECTIVE: Provide an unimpeded transition zone for areas subject to backwater flooding and delta development to allow for upslope habitat migration and lagoon expansion.

BOLINAS WYE WETLANDS 30% DESIGN

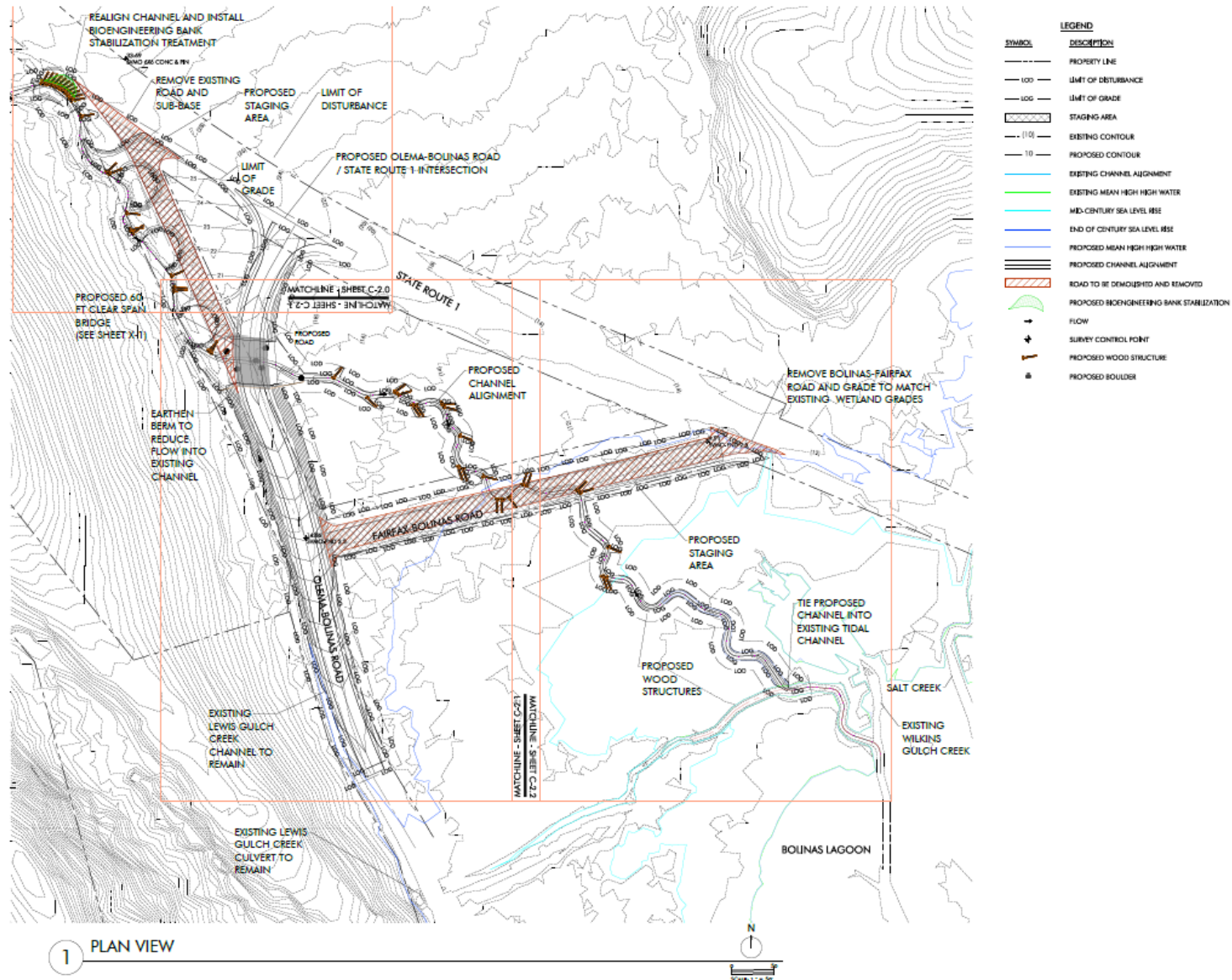


3

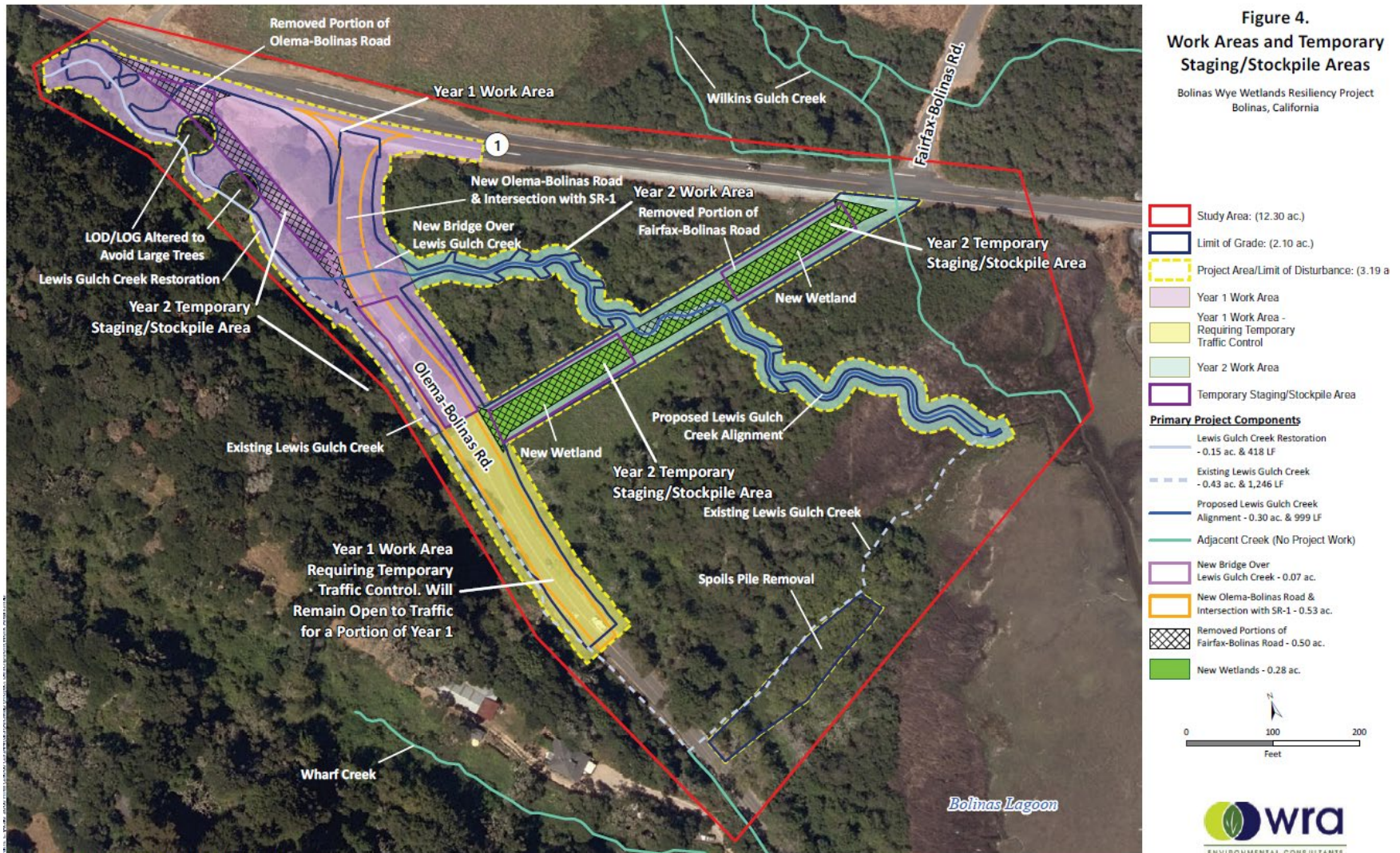
PLAN VIEW



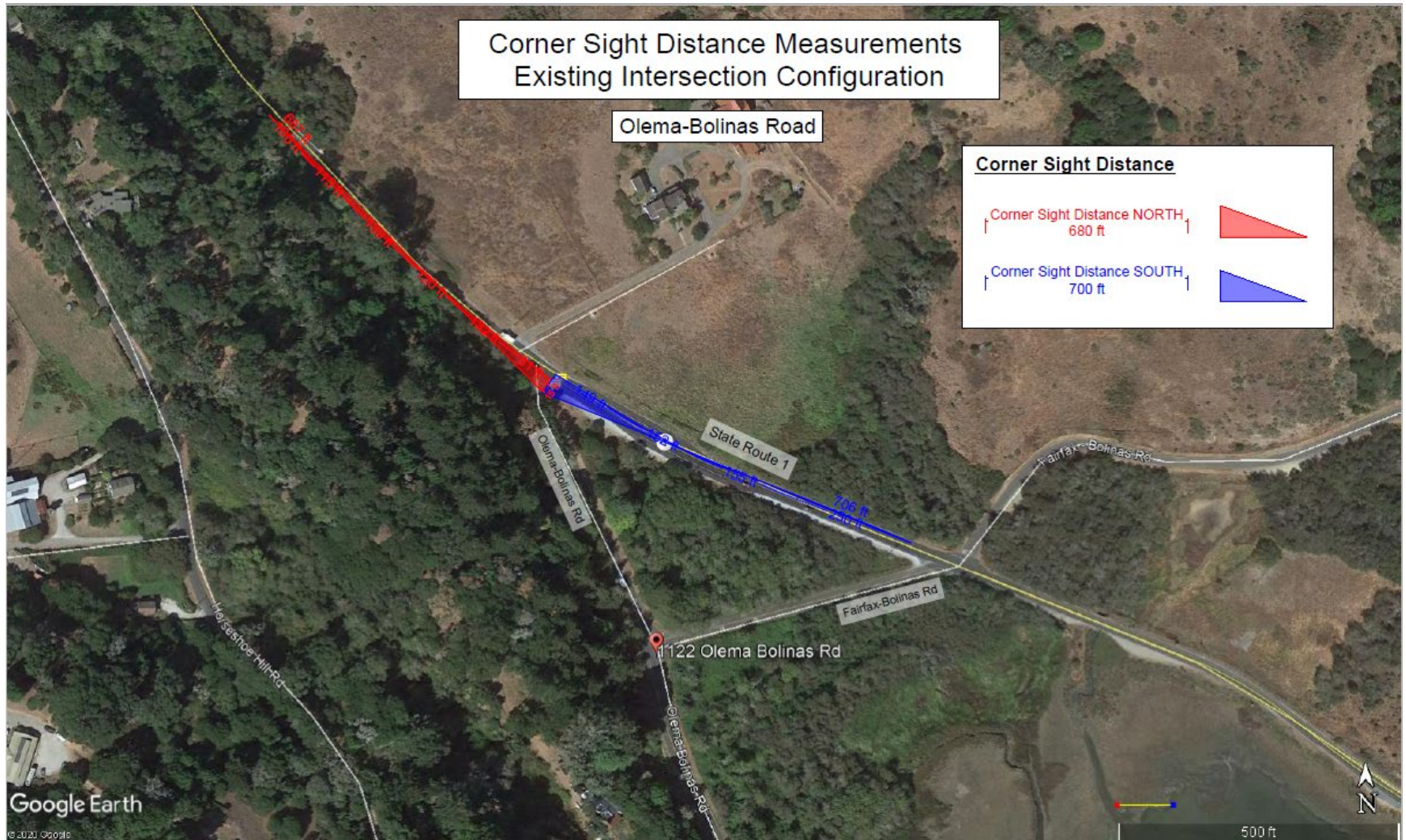
BOLINAS WYE WETLANDS 30% DESIGN



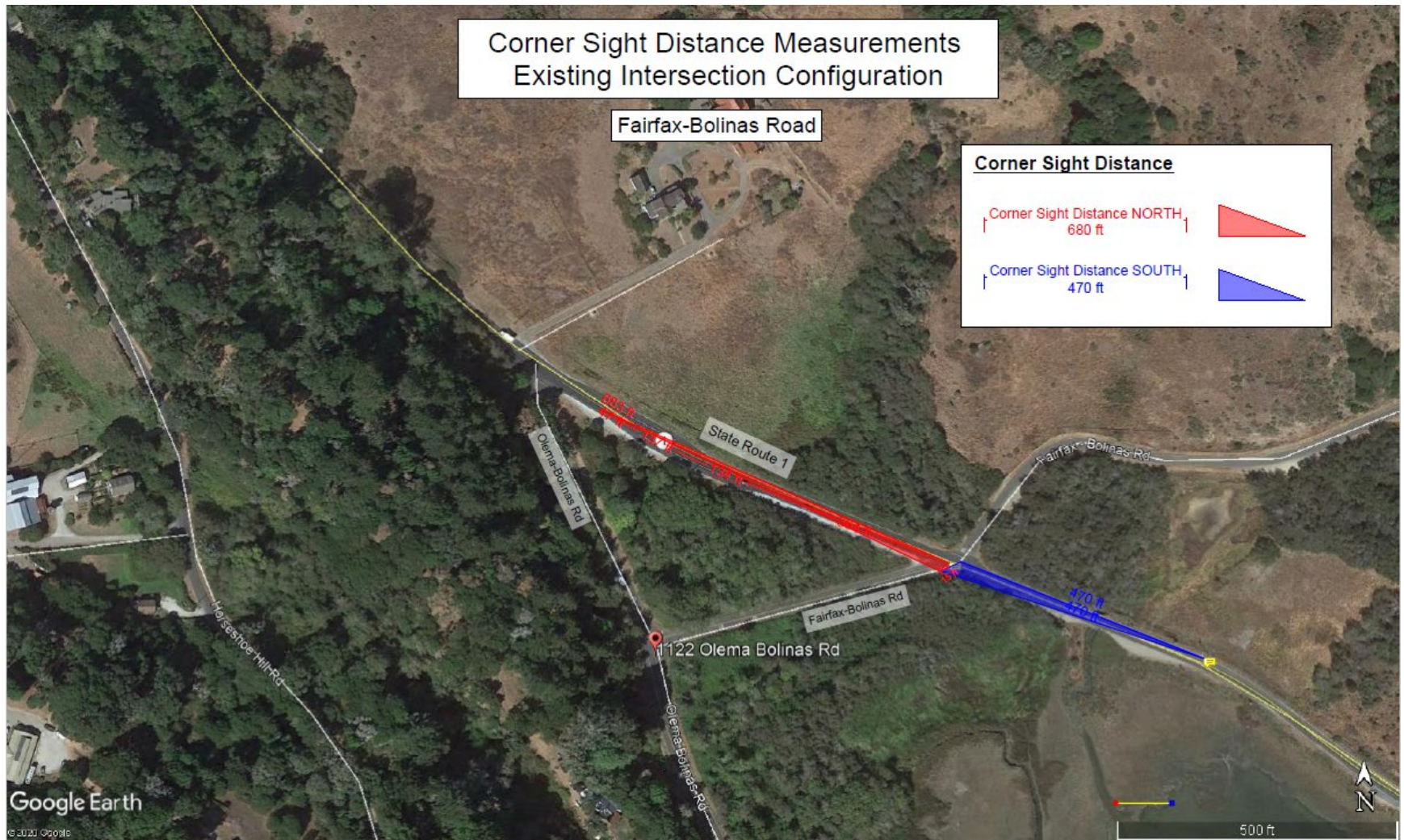
BOLINAS WYE WETLANDS 30% DESIGN



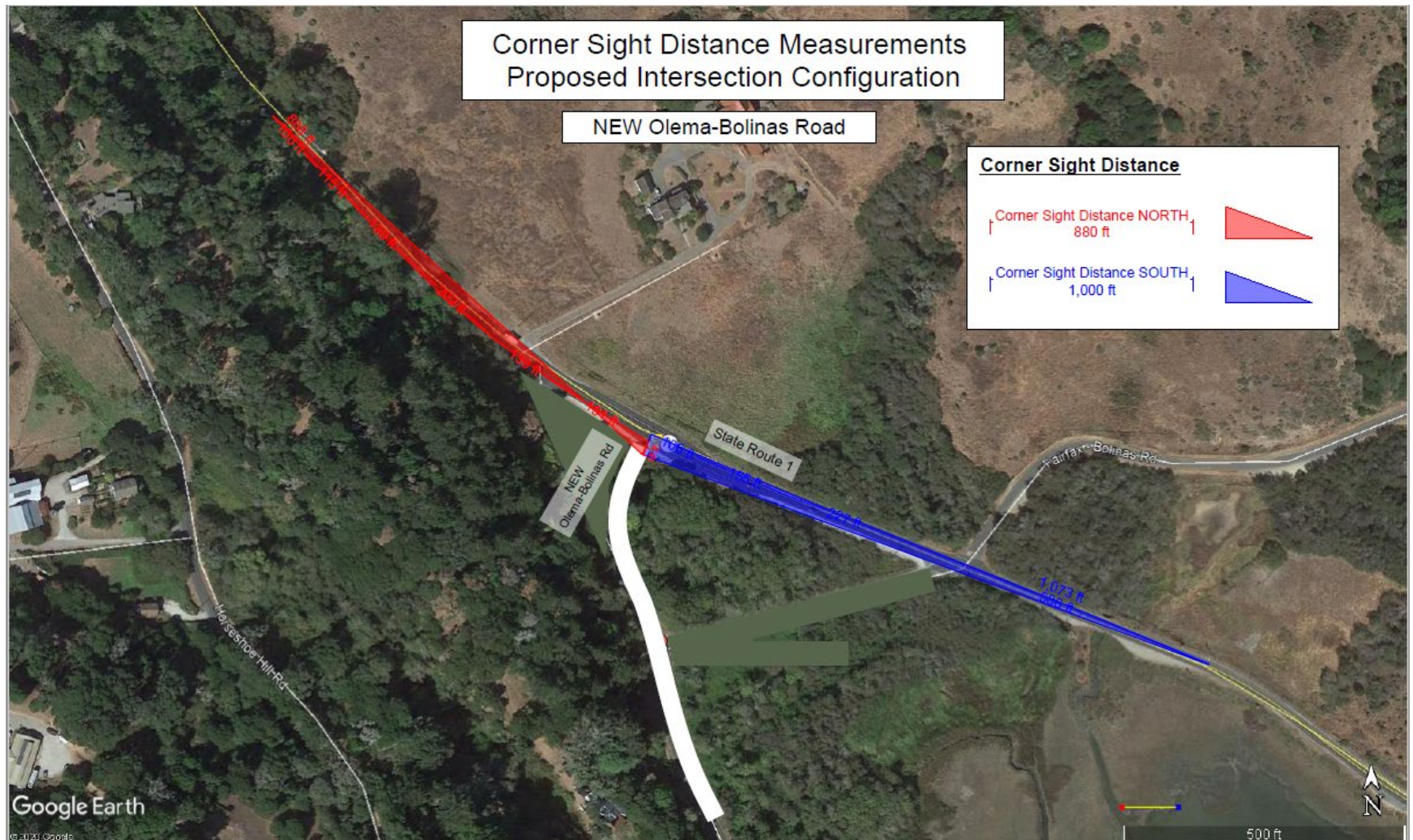
BOLINAS WYE WETLANDS 30% DESIGN



BOLINAS WYE WETLANDS 30% DESIGN



BOLINAS WYE WETLANDS 30% DESIGN



BOLINAS WYE WETLANDS 30% DESIGN

INTERSECTION SAFETY – SIGHT DISTANCE

- Existing Olema-Bolinas Road / SR 1 Intersection
 - 680 ft looking north
 - 700 ft looking south
- Existing Fairfax-Bolinas Road / SR 1 Intersection
 - 680 ft looking north
 - 470 ft looking south
- New Olema-Bolinas Road / SR 1 Intersection
 - 880 ft looking north
 - 1,000 ft looking south

PROJECT TIMELINE

- 30% Designs Complete, CEQA Initiated
- Spring 2021 - 60% Draft Design
- Spring 2021- Draft Initial Study
- Winter 2022 – Pending funding, Final Design complete
- Summer 2022/2023/2024 – Pending funding, Construction

QUESTIONS



Veronica Pearson

vpearson@marincounty.org

(628) 214-8085