

BCPUD PIPELINE



Spring 2022

270 Elm Road, P.O. Box 390, Bolinas, CA 94924 (415) 868-1224

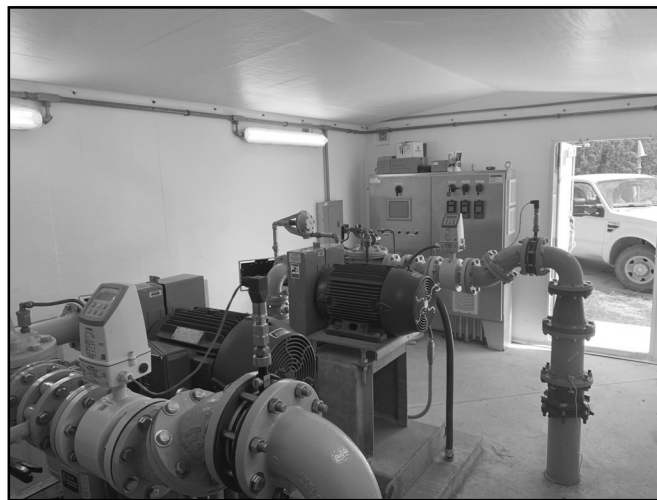
Reminder: ALL organics (including all food waste — cooked as well as raw, including cheese, meat and bones) must be disposed of in your green waste bin and NOT in the grey trash bin.

Effective January 1, 2022, a new law known as “SB 1383”, mandates that ALL organic waste must be separated from trash and diverted out of landfill to be processed instead at compost facilities. This will reduce methane emissions from landfills and increase the use of carbon-sinking compost, which greatly helps to combat the climate crisis. In addition to food waste, all food-soiled paper such as paper towels, napkins, or non-coated paper plates, can be placed in your green waste bin as well.

Water or Sewer emergency? Please contact our office at 415-868-1224

The BCPUD's New Irrigation Pump Station at the Wastewater Treatment Facility

In 2021, the BCPUD completed the installation of a new irrigation pump station at its wastewater treatment facility on Mesa Road, known locally as The Sewer Pond Property. Pictured to the right is an exterior view of the fiberglass enclosure that protects the new, above-ground pump station from the corrosive marine environment. To the right of the structure, the “intake lines” to Pond 3 are visible. The BCPUD's treatment facility is an integrated pond system consisting of four ponds: 1A, 1B, 2 and 3. No chemicals are used in the treatment process, with the district relying instead on natural biological processes, with minimal aeration and recirculation for odor control.



Wastewater is collected via a gravity collection system serving the Little Mesa and Downtown areas of town and pumped up to the treatment facility via a force main from the Wharf Road lift station. During disposal season, which begins on April 15 and ends on November 15 each year, following primary and secondary treatment, the final effluent is spray-irrigated onto a portion of a 90-acre parcel of land surrounding the integrated treatment pond system. *See photo on the top of the next page.*

The photo above is of the interior of the pump station, with its electrical control panels pictured on the rear wall and two of the new three pumps visible in the foreground. This station replaced the original pump station installed when the treatment facility was constructed in the 1970's. The original station consisted simply of two 40-hp vertical turbine pumps and electrical control panels that were not enclosed or otherwise protected from the coastal marine environment.



Sprayfields in action at the BCPUD's wastewater treatment facility

Water Supply Update as of May 2022

As of May 1, 2022, the district has received 25.7 inches of rain; as such, we've received nearly 10 inches more rain this rain-year than we did last rain-year, but we are still well below average (which is approximately 32.3 inches), as depicted in the Historical Rainfall chart. Crucially, our two emergency reservoirs are full and at 100% capacity.

The BCPUD closely monitors its water sources and the town's water consumption on a daily basis. For daily consumption updates, as well as monthly updates about the status of the district's water supply, please check our website: www.bcpud.org. As of May 1, water consumption remains low by historic standards, averaging approximately 65,000 gallons per day, or about 110 gallons per day per connection, thank you! Please do your best to continue to conserve and use water as efficiently as possible. We are in a third consecutive year of below-average rainfall, so it is important to conserve now to ensure a reliable supply for the dry Summer and Fall months ahead.

