

Bolinas Eucalyptus Project Conceptual Restoration Plan

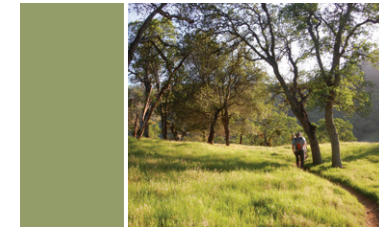


20 November 2023

Habitat Plan



Habitat Types



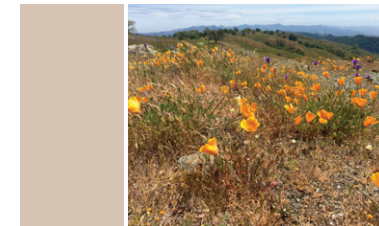
Oak Savanna / Grassland (4 acres)
Widely spaced native oaks with an understory of annual grasses, forbs, and shrubs.



Oak Woodland (3 acres)
Native oaks, California buckeye, toyon, coffeeberry, and other understory plants.



Coastal Scrub (1.7 acres)
Native shrubs.



Pollinator Prairie (0.7 acre)
Dominated by native forbs, nectar producing species, and grasses.



Willow Thicket (0.1 acre)
Arroyo and other native willows. Dependent on appropriate hydrology.



Wetland / Wet Meadow (0.2 acre)
Wetland grasses, rushes, sedges, and forbs. Highly dependent on hydrology and soils.

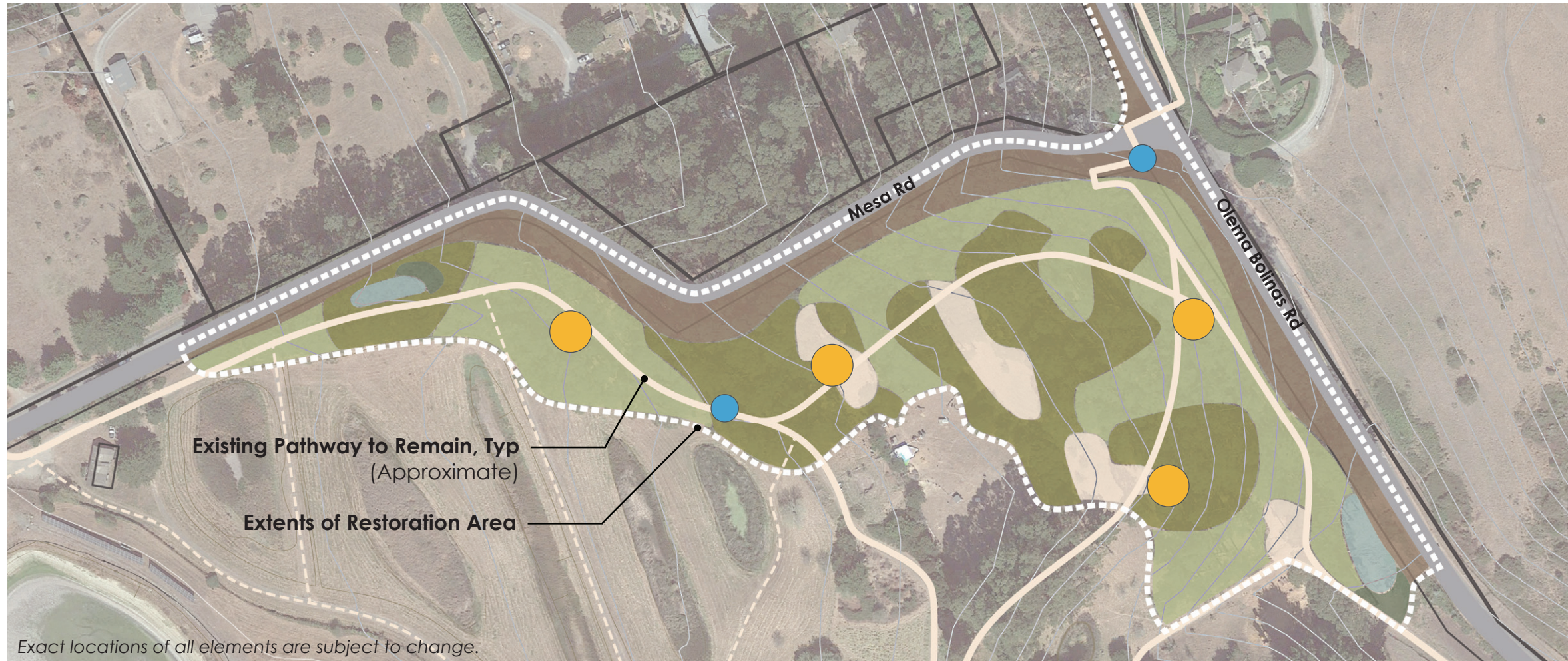


Bolinas Eucalyptus Project Conceptual Restoration Plan



20 November 2023

Site Plan



Proposed Site Features



Pause Points / Seating Areas

Strategically placed nodes throughout the site provide opportunities for users to rest, relax, and take in the sights and sounds of nature. These nodes also offer opportunities to recognize donors and others who made this project possible.



Interpretive and Educational Elements

Signage, art, and other elements explain the project's history and the rationale for the removal of the Eucalyptus stand, and introduce the public to the plants and animals that benefit from the project.



Eucalyptus Re-Use (Throughout the Site)

Material salvaged from the removed Eucalyptus can be re-used to create site furnishings like benches and fences, or mulched and spread throughout the site as a ground covering.

Habitat Features (Locations TBD)

Existing trees may be girdled and left in place as standing snags or felled and placed throughout the site as coarse woody debris. Root balls may be used to create in-stream complexity as part of off-site stream restoration projects (by others).



Tree Removal Plan



Tree Removal and Replacement

Existing Eucalyptus Stand

The Project's Existing Eucalyptus Stand is dominated by blue gum eucalyptus (*Eucalyptus globulus*), but also includes:

- Monterey cypress (*Cupressus macrocarpa*)
- Monterey pine (*Pinus radiata*)
- Coast live oak (*Quercus agrifolia*)
- Douglas fir (*Pseudotsuga menziesii*)
- A stand of Acacia not included in the Tree Inventory.

The Existing Eucalyptus stand includes:

- 413 live trees over 19.5" dbh
- 726 live trees smaller than 19.5" dbh

Tree Replacement Summary

All Eucalyptus trees in the existing Eucalyptus stand will be removed, while nearby stands of Eucalyptus (not shown) will remain in place. Wherever possible, existing native trees and shrubs will be preserved, but some may need to be removed. In total, **1,139 existing trees** were documented within the existing Eucalyptus stand.

The conceptual restoration plan includes planting approximately **700 native trees** in the Oak Woodland and Oak Savanna areas. This replanting effort would allow for a replacement ratio of **one (1) new tree for every 1.6 trees removed**.

Replacement planting would be designed with **fire wise principles** in mind with the goal of limiting the risk of wildfire on the site.

Source for existing tree information: *The Bolinas Eucalyptus Project Inventory: Zone 5*, by Tom Gaman, March 2023.

