

Bolinas Eucalyptus Project



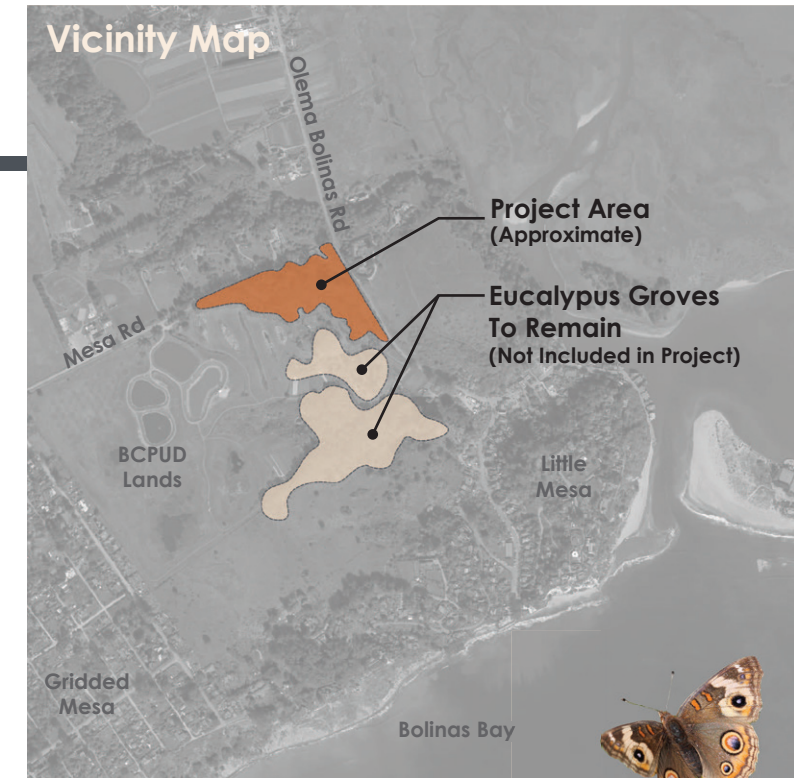
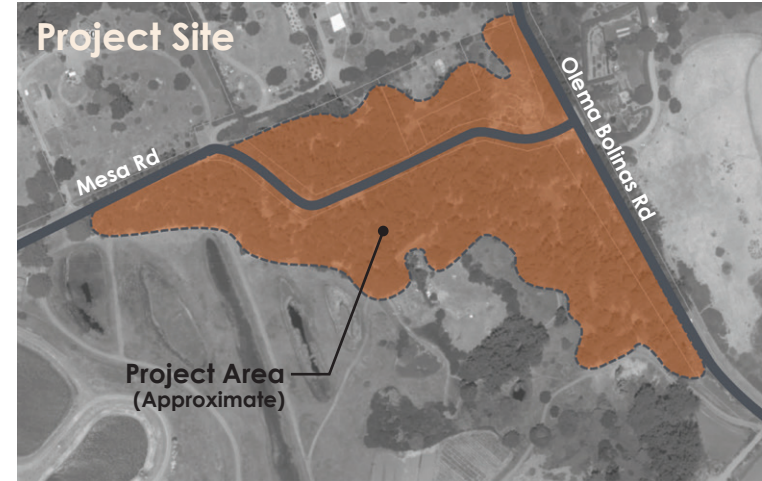
20 November 2023

Project Goals

- Eliminate extensive safety hazards along roadways and pathways (including broken treetops and uprooting/falling trees) posed by the declining Eucalyptus stand.
- Ensure reliable and safe emergency access and evacuation routes for Bolinas.
- Enhance habitat for native wildlife, including pollinators, by establishing and maintaining appropriate ecosystems on the project site.
- Create a net benefit to regional Monarch habitat.
- Reduce waste by upcycling lumber removed by the project.
- Remove the long-term financial burden to the community of maintaining a deteriorating Eucalyptus stand.

Project Description

The Bolinas Eucalyptus Project (BEP) is working to address hazards posed to Bolinas residents and visitors by a large declining stand of roadside Eucalyptus near the intersection of Mesa Road and Olema Bolinas Road in Bolinas, California. The aging trees, many now massive, are falling at an increasing rate. The project's primary objective is to increase human safety and emergency access along a major thoroughfare and primary evacuation route. Secondary objectives include improving the ecological health of the site and creating benefits for Monarch butterflies and other important pollinators.



Safety and emergency access for the community of Bolinas will be improved by removing ailing Eucalyptus trees from the project site. In addition, the project will restore native ecosystems on the site by planting appropriate native trees,

shrubs, wildflowers, and grasses. This will enhance habitat for native wildlife, including pollinators and birds. Long-term monitoring and adaptive management strategies will ensure the health and success of the restored site.



Existing Eucalyptus Stand





Conceptual Cross Section

Representative Plant Species



Enhancing Monarch Habitat

The project planting design will focus on enhancing habitat for migratory Monarchs and other pollinators by:

- Including a diversity of **early spring, late fall, and winter blooming nectar-producing plants** to create food supplies for Monarchs during their autumn clustering and southward migration.
- Maximizing the square footage of pollinator targeted habitat.

Resource Upcycling

Wood harvested from removed Eucalyptus trees can be reused for:

- Salmon Habitat Enhancement in Local Creeks
- Dune and Beach Stabilization
- Site Furnishings for the Project
- Flooring (after milling)

20 November 2023